



# TRAILSIDE EYE SPY

Check off each item as you see it along Quarry Trail in Deep Lock Quarry Metro Park, 5779 Riverview Rd., Peninsula, OH 44264

## QUARRY STEPS

Beginning in 1800, this quarry provided the literal building blocks of Akron and surrounding communities via the Ohio and Erie Canal. By 1940, CCC crews were the last to remove stone, some of which can be found in park structures such as Burshwood Lodge at Furnace Run Metro Park.



1.

## SASSAFRASS TREE

Did you know that root beer was historically made from the roots of sassafras trees? Sassafras are recognized by their distinct green twigs and deeply furrowed, reddish-brown bark. In spring, be on the lookout for their mitten-shaped leaves.



6.



2.

## MILLSTONES

The sandstone here had a fine texture that was perfect for making millstones for food processing and grindstones for metalworking. The quarry also produced flagging, which were thin stones used for sidewalks. How many of these stone remnants can you find along the trail?



7.

## MASONS MARK

Many talented masons were employed at the quarry over the years. This particular symbol was carved by a meeting of Royal Arch Masons at the quarry in 1953, eleven years before Deep Lock Quarry opened as a Metro Park. What do you think this emblem symbolizes?

## DEEP LOCK

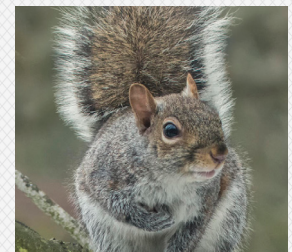
This step along the canal was able to raise and lower canal boats a whopping 17 feet! Some of its original sandstone blocks were capped with concrete in the early 1900s in a last-ditch effort to fix the failing canal system.



3.

## EASTERN GRAY SQUIRREL

Look for these acrobats scampering up trees and on the forest floor, digging up the last of their acorns. Whatever they forget to dig up could grow into the oak trees of the future, allowing nature to continue her reclamation of Deep Lock Quarry.



8.



4.

## LICHEN

These strange organisms are the result of a symbiotic relationship between fungi and algae – fungi provide the structure and algae photosynthesize. Lichens can colonize barren landscapes like stone and come in a variety of interesting shapes and colors.



9.

## PILEATED WOODPECKER

Look for the large black bodies, bold white wing patches and distinct red crown of Ohio's largest woodpecker. Don't see the birds? Not to worry, they leave evidence in the form of tree cavities, sometimes greater than six inches high and three inches wide!

## MYSTERY STONES

Take a look at the stack of stones to your left as you arrive at the quarry steps. These were originally shaped to support the hillside along the trail at Virginia Kendall Lake. The project was carried out using wooden beams instead, leaving behind these remnants.



5.